



Dam Exercises and the NSW State Emergency Service

www.ses.nsw.gov.au



MISSION - SAVING LIVES AND CREATING SAFER COMMUNITIES

VISION - A TRUSTED VOLUNTEER-BASED EMERGENCY SERVICE, WORKING TOGETHER TO DELIVER EXCELLENCE IN COMMUNITY PREPAREDNESS AND EMERGENCY RESPONSE

Who are we?

- Volunteer based Emergency and Rescue Service
- Provides emergency assistance to the community 24 hours a day, 7 days a week, 365 days a year
- Approx. 9,000 volunteers throughout NSW
- Combat Agency for Storm, Flood and Tsunami in NSW
- Provides majority of rescue in rural areas of NSW including GLR, RCR, VR, BSAR and Evidence Searches
- Also supports CFR and PAD
- Support NSW RFS during campaign fire events
- Works closely with ESO's including NSWPF, NSWA, NSW RFS and FRNSW

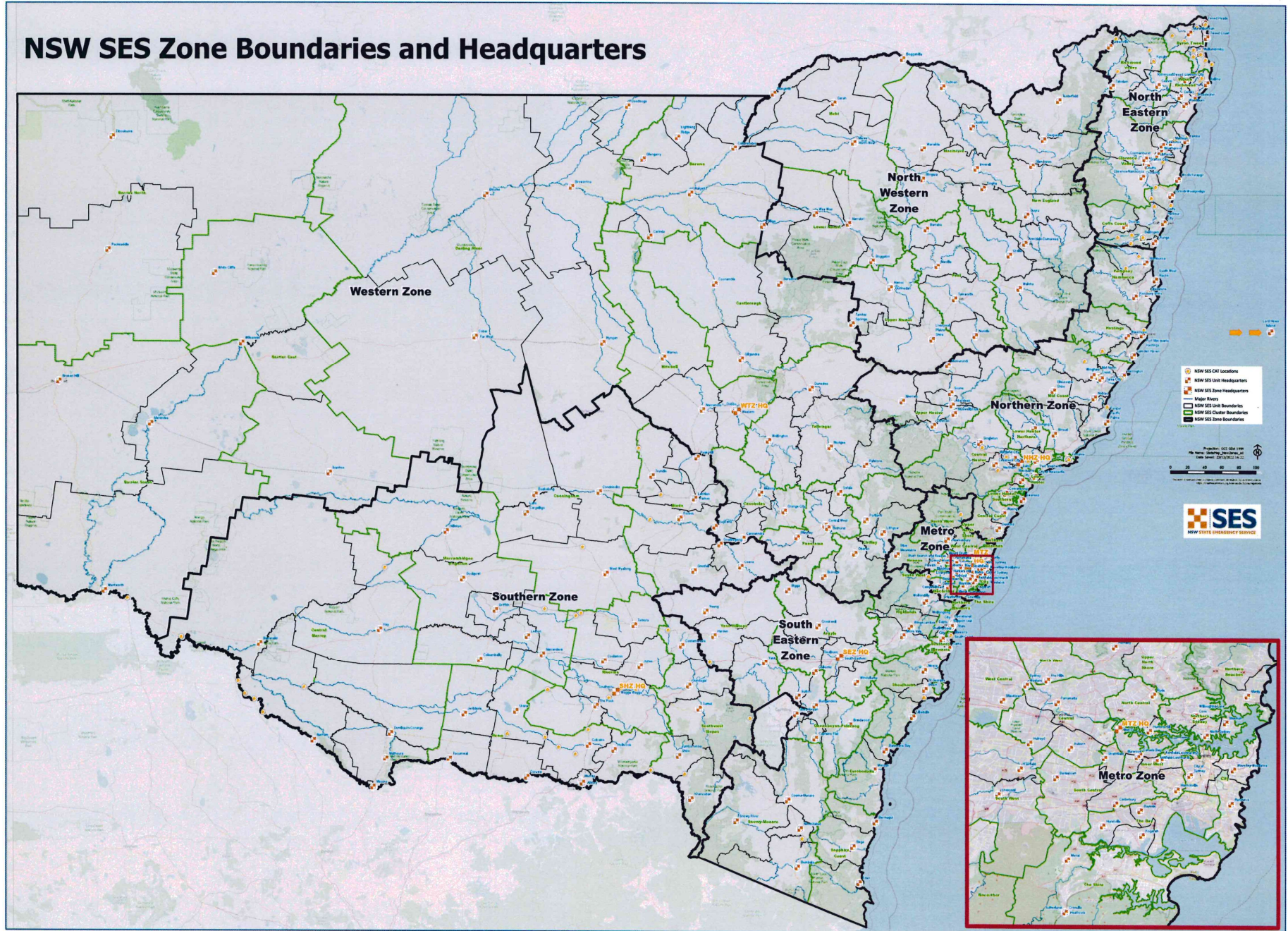
Structure

- The NSW SES has a three tiered structure
- State, Zone and Units
- **State Headquarters located in Wollongong**
 - ✓ State Operations Centre – Operates 24/7/365
 - ✓ Answer point for **132 500** and **1300 737 326**
 - ✓ State Command Centre

Structure

- **7 Zone Headquarters**
 - ✓ **Metro - Rhodes**
 - ✓ **Western – Dubbo**
 - ✓ **South Eastern – Goulburn**
 - ✓ **Southern – Wagga Wagga**
 - ✓ **Northern – Metford**
 - ✓ **North Western – Tamworth**
 - ✓ **North Eastern – Lismore**
- **243 Units – located throughout NSW**
 - ✓ **Volunteers**

NSW SES Zone Boundaries and Headquarters





Dam Emergency Plans

- NSW SES needs to know the consequences of potential dam failure for response planning. These include;
 - Trigger levels for White, Amber and Red Alerts
 - Number of people and properties at risk of inundation
 - Duration of potential flooding
 - Depth of inundation
 - Amount of water being released
 - Warning of people and communities at risk downstream of the dam using the Australian Warning System
- Keen to review and provide feedback and advice on Dam Emergency Plans to dam owners
- Incorporates consequences of dam failures into response arrangements in Flood Plans

Dam Exercises

- Keen to participate in desktop and practical safety exercises conducted by dam owners
- Have taken part in exercises conducted by WaterNSW and other dam owners across NSW
- Keen to build relationships with dam owners
- Exercises allow arrangements in Dam Emergency Plans to be assessed and evaluated in a safe simulated environment
- Changes to arrangements in Dam Emergency Plans can be identified and made resulting from lessons learned during the exercise

Contact

- Many dam owners have existing relationships and contacts with NSW SES Zones and Units
- Dam owners **should** notify the NSW SES of planned exercises by emailing details to nswses.communityplanning@ses.nsw.gov.au
- Dam owners are asked to provide as much notice as possible of planned exercises
- NSW SES will arrange for a suitable representative or representatives to attend and participate

Dams Summary Sheets

- NSW SES prepares a Dam Summary Sheet from information contained within each Dam Emergency Plan
- These are used internally within the NSW SES during flood incidents and emergencies to provide key information to Incident Controllers to make operational decisions and undertake response planning during flood events
- NSW SES has developed a template and is currently trialing with WaterNSW
- The plan is to roll the Dam Summary Sheet for use by other dam owners across NSW

Questions

- Craig Ronan ESM
- Phone: 0418 476 254
- Email: Craig.Ronan@one.ses.nsw.gov.au

FOR EMERGENCY HELP IN
FLOODS AND STORMS CALL

132 500