



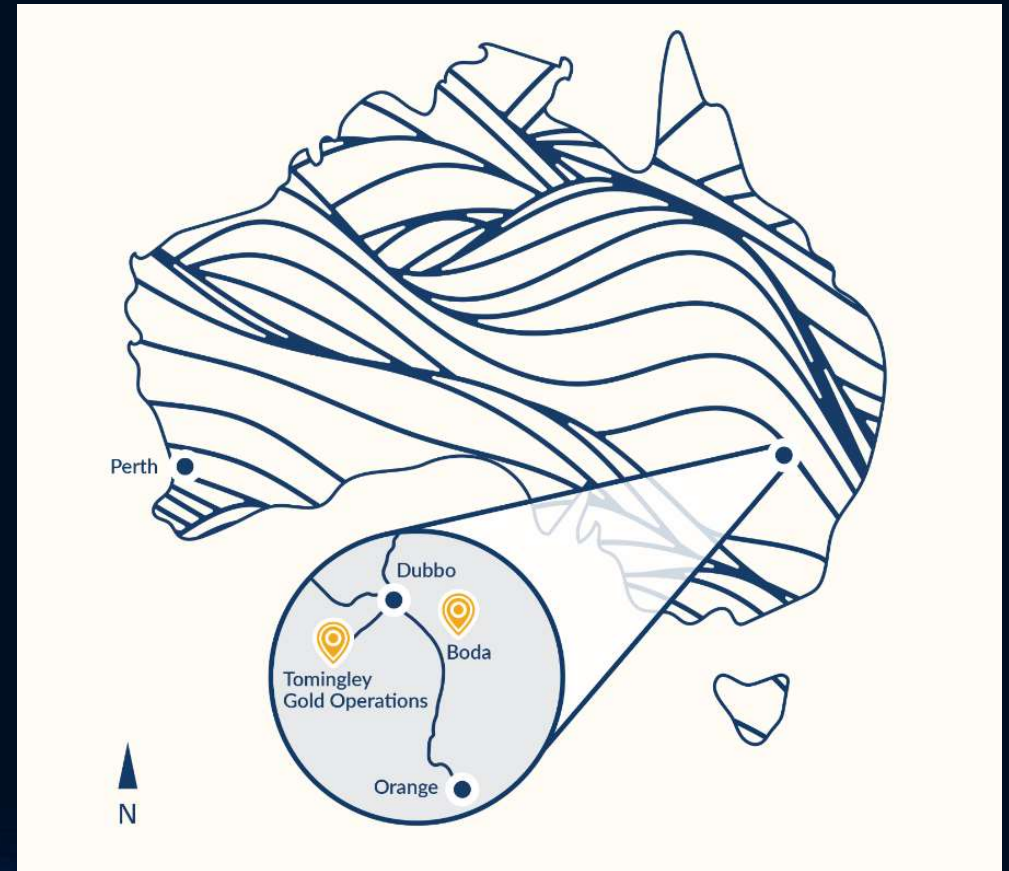
Tomingley Gold Operations

Gold mining and production



Open cut and underground gold mine

- Alkane Resources
- Tomingley Gold Operations Pty Ltd
- 50km southwest of Dubbo
- Tailings dam (800m x 400m)



Emergency exercise planning

- Engaged an external crisis & emergency management consultant to:
 - Update our Emergency Response Plan; and
 - Facilitate training and emergency exercises.
- Operating Mine site
 - 24/7 operation ; well – resourced for equipment and people.
 - Incident Management Team (IMT).
 - Good command structure internally.
 - Coordination is area of most need for improvement.

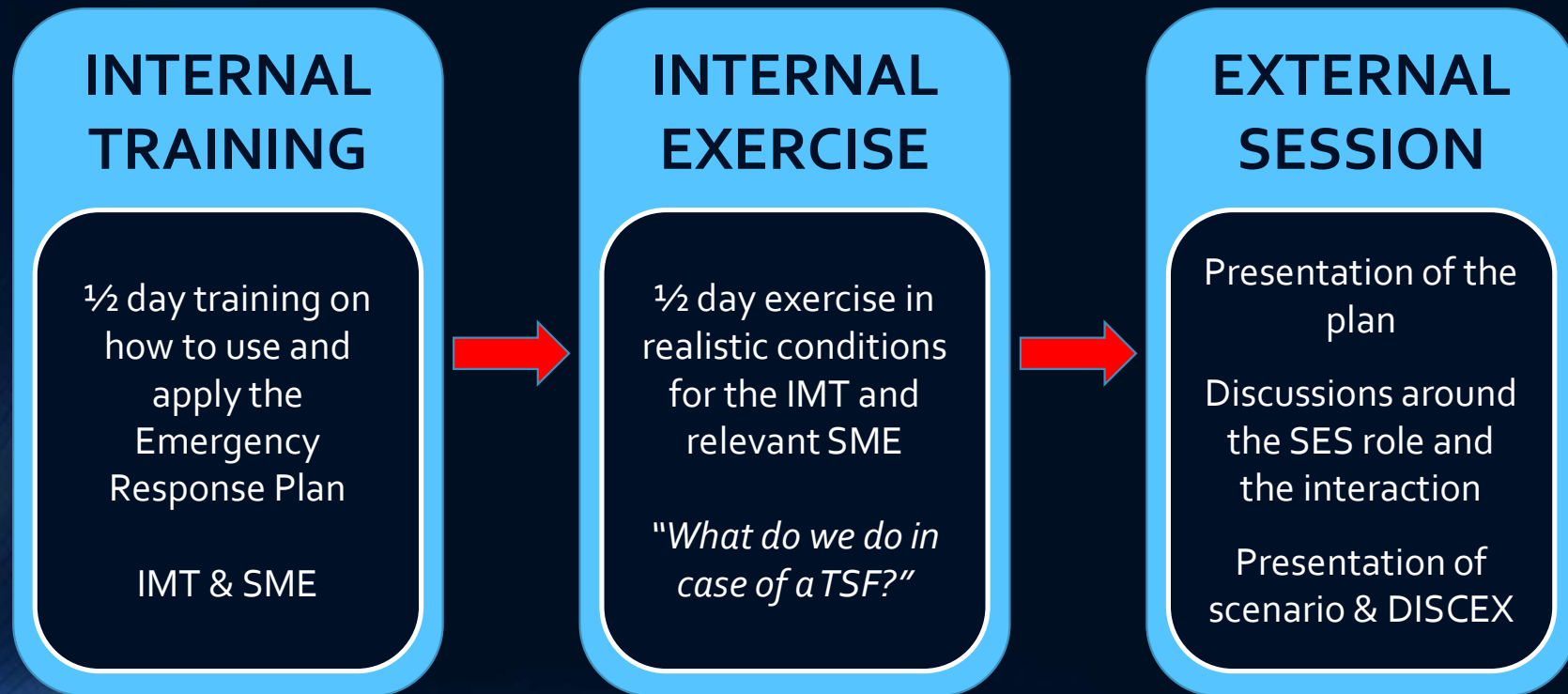


The Scenario



- Stretched over 8 days (time lap in the exercise)
 - Rain and weather forecast indicates wet but “not too bad”
 - Ground is saturated from previous month
 - 70 mm on Day 1, 130 mm on Day 5, and 110 mm on Day 6
- Starts as a wet weather scenario potentially overtopping
 - Day 6 in the evening – inspection detect possible piping failure
 - Day 7 in the morning – piping failure confirmed
- Components for Tomingley Gold Project
 - Assessment of forecast and prediction of the dam behavior
 - Decision on activation of the Emergency Response Plan and IMT
 - IMT internal TGO decisions and actions
 - IMT interaction with SES and potentially other external stakeholders

Exercise Components

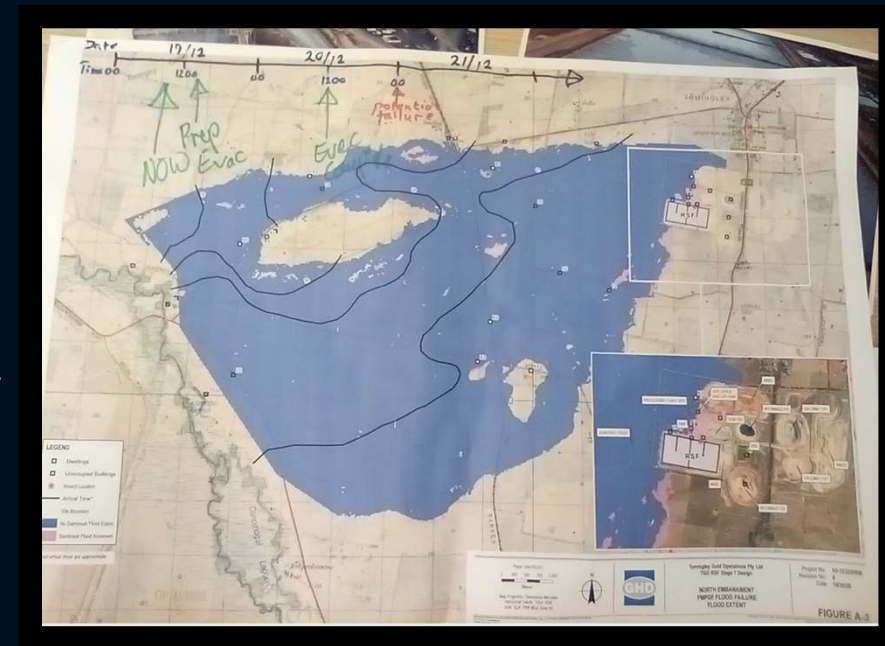


Off-site component

- In a real situation the SES part of the operation will not be controlled from site, the whole region had received 310 mm rain, hence SES would already be in "Red Alert" (SES Emergency Alert Levels)
- The same weather developments as in the internal exercise was presented
- A notification message was delivered
- A Liaison Officer from Tomingley Gold entered the SES team and presented the essential details, such as the inundation map for the predicted failure and a timeline
- Coordination in an emergency operation requires a concept and practice – we trained that

Key Learnings

- Background info about tailings dams and failures was very useful for all to understand size and scale.
- Liaison officer arriving with Inundation maps with timeline written on it was well received by SES.
- Response times of emergency services mean that TGO will need to take charge for areas within first 2 hours.
- SES likely to be based in Dubbo for Flood failure ; Narromine for Sunny Day Failure.
- Need to engage with Dubbo LEMC not just Narromine LEMC.
- We need to repeat the exercise and aiming for a larger attendance.



What changes are we making as a result?

- TGO amending SES contact details to new 1300 number.
- TGO + GHD expanding dam break assessment boundary to include Bogan River.
- SES adding TGO to flood warning alerts for Bogan River.
- SES forward to TGO relevant Bureau of Meteorology alerts.
- TGO to have community engagement on RSF hazards and response plan via our Community Consultative Committee.
- TGO to request to attend Dubbo LEMC in addition to Narromine LEMC.

Thank you



TOMINGLEY
GOLD OPERATIONS PTY LTD
(A wholly owned subsidiary of Alkane Resources Ltd)